

CONSULTANT:

SEAL:

1736 E ATLANTIC BLVD
POMPANO BEACH, FL 33060

220 MAIN ST
GAINESVILLE, FL 32601

PROJECT NUMBER: CLR2023-03

ATLANTIC ONE

CLIENT:



△	DRAWING RELEASE	DATE
	DRC	06/11/2024

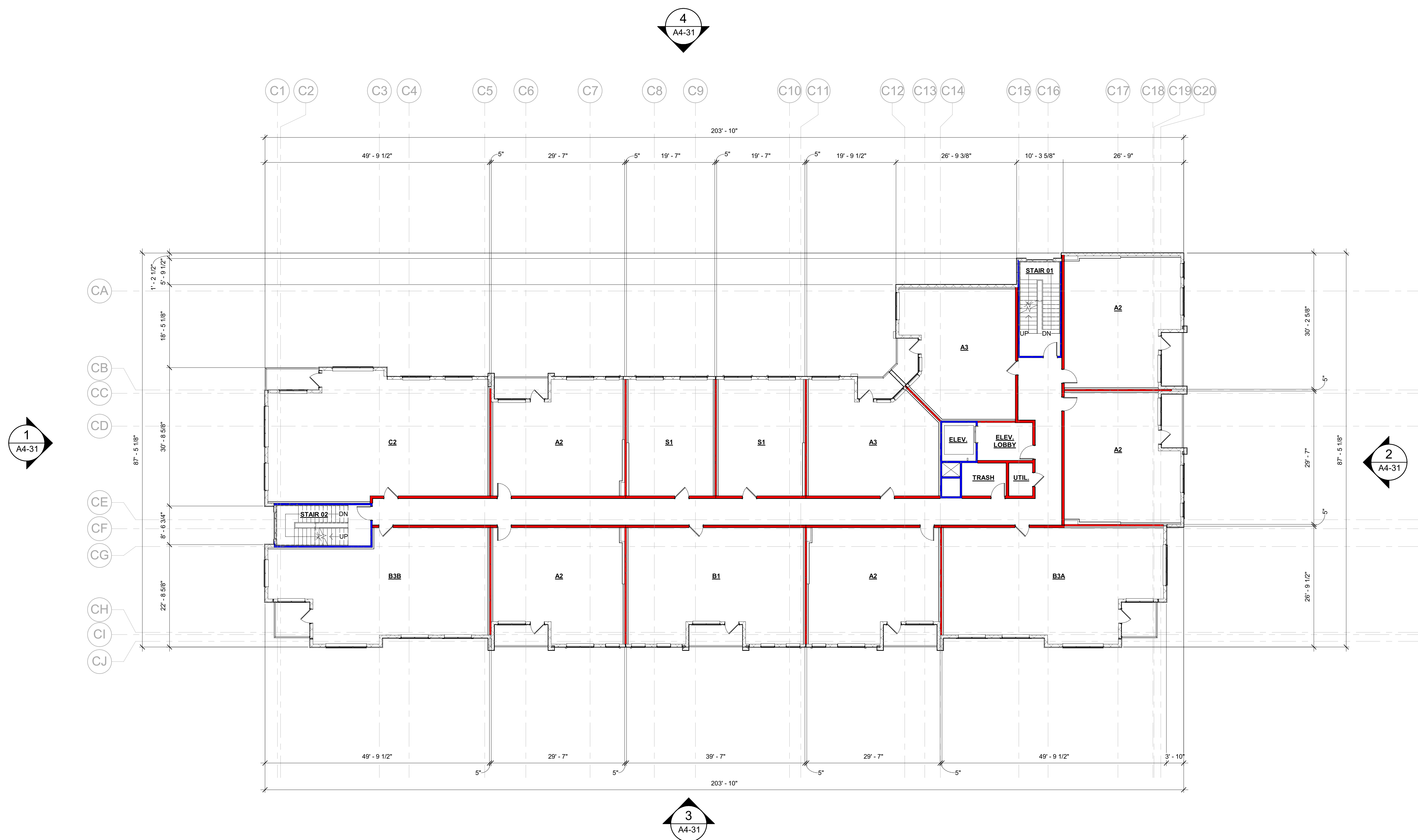
TITLE:

BUILDING 3000 -
LEVEL 02-05

SHEET NUMBER:

A1-32

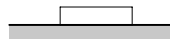
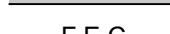



© COPYRIGHT 2024 DYNAMIK DESIGN



1 BLDG 3000 - LEVEL 02-05
SCALE: 3/32" = 1'-0"

LEGEND

	CMU WALL
	CAST-IN-PLACE CONCRETE WALL
	PRECAST CONCRETE WALL
	ROOM NUMBER
	RESIDENTIAL UNIT DESIGNATION
	LOCATION OF ENLARGED UNIT PLANS, RCP AND INTERIOR ELEVATION REFERENCES
	WALL PARTITION
	DOOR CALLOUT
	WINDOW TYPE CALLOUT
	STOREFRONT TYPE CALLOUT

	FIRE EXTINGUISHER CABINET - SURFACE MOUNT
	FIRE EXTINGUISHER CABINET - SEMI-RECESSED
	FIRE EXTINGUISHER CABINET - RECESSED
	1-HOUR RATING
	2-HOUR RATING

GENERAL NOTES

1. REFER TO A3 SERIES FOR ENLARGED RESIDENTIAL UNIT PLANS, INTERIOR DOOR TYPES AND LOCATIONS, RESIDENTIAL UNIT RCPs, FISH FLOOR PLAN, AND FHA PLAN.
2. REFER TO SHEET CD SERIES FOR WALL AND FLOOR/CEILING ASSEMBLY TYPES AND ADDITIONAL INFORMATION.
3. REFER TO A8 SERIES FOR DOOR SCHEDULES, LEGENDS, AND DETAILS.
4. ALL SLOPES TO BE 1% (0.01).
5. REFER TO INTERIOR DRAWINGS FOR AMENITY FIXTURES AND FINISH SPECIFICATIONS.
6. REFER TO INTERIOR DESIGN DRAWINGS FOR CONDITIONED CORRIDOR FINISHES. CONTROL JOINTS IN CORRIDOR CEILING TO BE 30'-0" O.C. MAX. PROVIDE JOINTS BEGINNING AT CORRIDOR INTERSECTIONS UNLESS NOTED OTHERWISE.
7. DOOR HINGES AND HANDLES SHALL BE LOCATED AT MIDPOINT OF WALL OR 4" CLEAR FROM ADJACENT WALL CORNER TO HINGE SIDE, TYPICAL.

KEY PLAN

